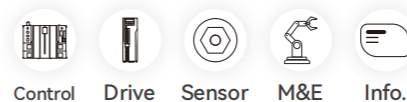


✉ john.zuo@hcfa.cn



HCFA

BETTER WORK, BETTER LIFE 

HCFA
Initiative Integrity Innovation

HMI TP2000^{series} Touch Screen

Zhejiang Hechuan Technology Co.LTD
<https://www.hcfaglobal.com/>

Headquarters address

No.9,Fucai Road, Longyou industrial Zone, Quzhou City, Zhejiang Province, P.R.China

Headquarters address

No. 299, Lixin Road, Qingshanhu Sci-Tech City, Lin'an District, Hangzhou City, Hangzhou R&D Centre Zhejiang Province

EtherCAT® is owned by Beckhoff Automation Co., Ltd.; MECHATROLINK® is owned by the MECHATROLINK Association, which is an open field network;
The other products, product names, and product trademarks or registered trademarks described in this manual are owned by each company.



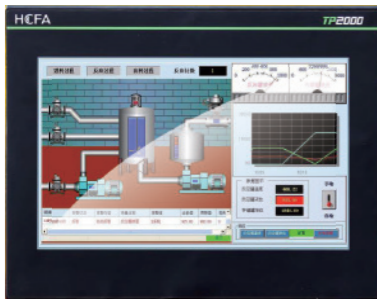
All information in this document is subject to change without notice.
Manual No.: June, 2023 Issue No. 1

Due to the delay in updating the paper version, please refer to the official website for the latest product information

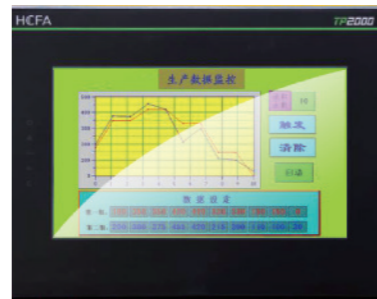


TP2000

Meet your needs in more occasions



TP2510 10.1" touch screen



TP2507 7" touch screen



TP2504 4.3" touch screen

Personalized Service

New upgrade for TP1000 series, Performance greatly improved for TP2000 series
More beautiful product appearance, more stable performance, more functions to meet customers' requirements in different applications.



Performance

ARM platform, Higher performance,
50% improved compared
to last generation products



Interfaces

Ethernet, communication port,
USB and SD card supported



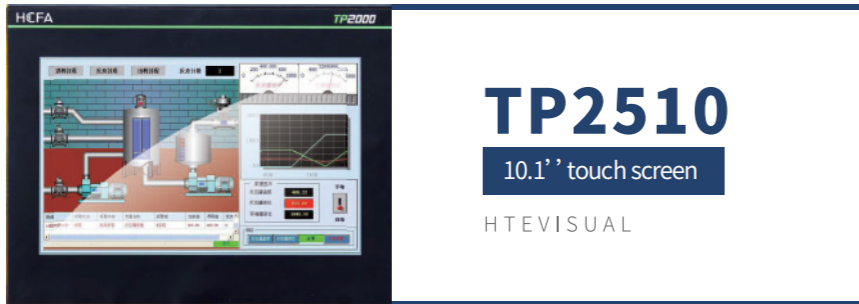
Easy-to-use

New configuration software-HCT Designer,
make the operation much easier

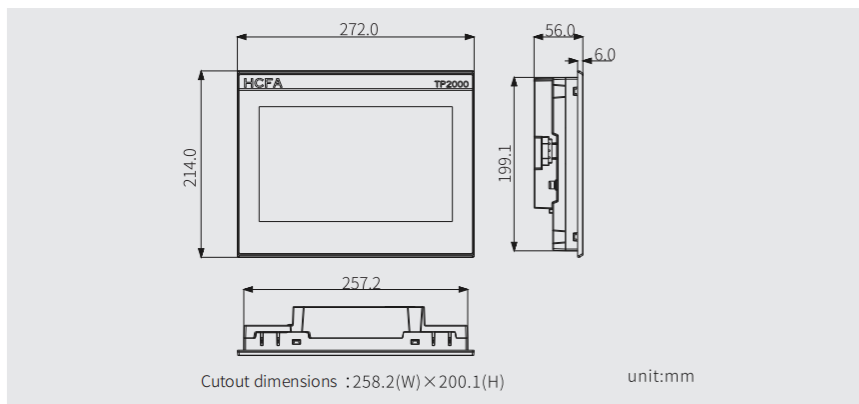


Size

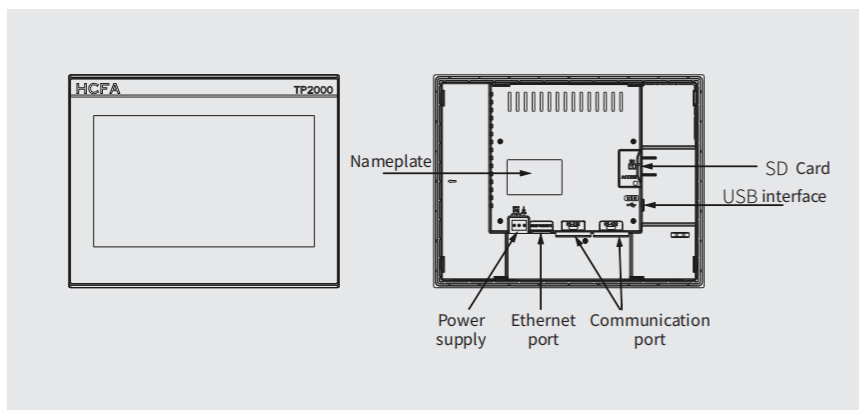
Full range of sizes,
exquisite appearance
and easy to install



External dimension



Parts name



Configuration parameters

Parameters	TL2510	TP2510	TP2510-E
Color display	24bit	24bit	24bit
Ethernet	×	×	✓
SD card	×	✓	✓
USB HOST	✓	✓	✓
USB DEVICE	✓	✓	✓
COM1/COM3	✓	✓	✓
COM2/COM4	×	✓	✓
Isolated power supply	Non-isolated power Surge protection	Isolated power Surge protection	Isolated power Surge protection

Basic parameters

Electrical specification

Power Consumption	<10W
Rated voltage	24VDC, Input Range: 18V~28VDC
Power protection	Isolated power supply block, Protect from surging and thunder strike
Allowable momentary power-off	<5mS
CE	Complied with EN61000-6-2:2005, EN61000-6-4:2007
RoHS	Surge Immunity: ±4KV, EFT: ±4KV, ESD: 4KV, Air: 8KV

Working environment

Operation Temperature	0~50°C
Storage Temperature	-20~60°C
Operation Humidity	10~90%RH (Without condensation)
Vibration Resistance	10~25Hz (2G/30min in XYZ direction)
Cooling	Natural air cooling

Others

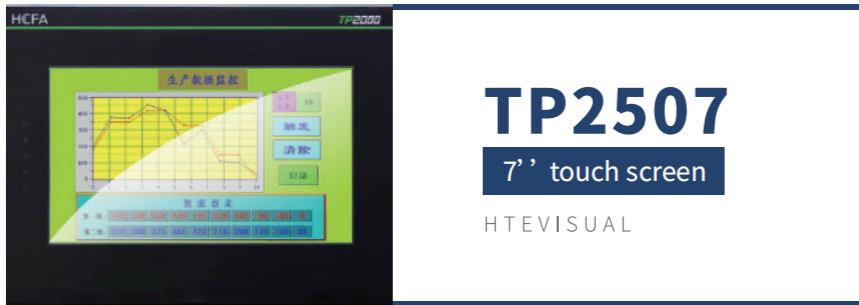
Protection Level	Front IP65 (With NEMA Panel), Back IP20
Housing Material	PBT+PC
Cutout Dimension	258.2 × 200.1 (mm)
Dimension	272 × 214 × 56 (mm)
Weight	About 1300g

Hardware specification

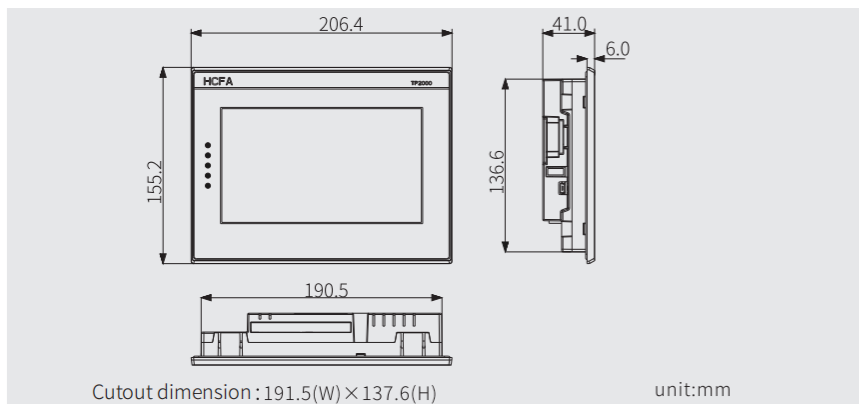
Display	10.1" TFT LCD
Resolution	800 × 480
Color	24bit
Brightness	300 cd/m²
Backlight	LED
LCD lifetime	50000 hours
Touch Panel	4 wire resistive touch panel (Surface hardness 4H)
CPU	600MHz ARM Cortex A8
Memory	128M Flash + 128M DDR3
RTC	Built in real-time clock
Ethernet	10M/100M Ethernet port
USB Port	ONE USB Device 2.0 Ethernet port ONE USB Host 2.0
Program Download	USB Host/ USB Slave/ SD card/ Ethernet are provided.
COM port	COM1/COM2: RS232/RS485/RS422; COM3/COM4: RS232

Accessories

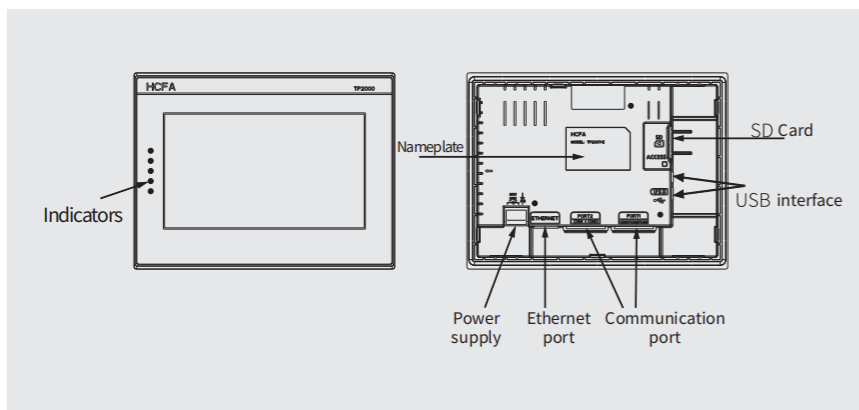
TP16-PLC- R4-8P-3M	Communication cable between TP2000 series HMI and HCFA PLC, RS422, Round 8PIN, 3M
TP16-PLC- R2-9S-3M	Communication cable between TP2000 series HMI and 232, RS232, 9PIN serial port (female), 3M



External dimension



Parts name



Configuration parameters

Parameter	TL2507	TP2507	TP2507-E
Color display	24 bit	24 bit	24 bit
Ethernet	×	×	✓
SD card	×	✓	✓
USB HOST	✓	✓	✓
USB DEVICE	✓	✓	✓
COM1/COM3	✓	✓	✓
COM2/COM4	×	✓	✓

Isolated power supply

Non-isolated power Surge protection

Isolated power Surge protection

Isolated power Surge protection

Basic parameters

Electrical specification

Power Consumption	<7W
Rated voltage	24VDC, Input Range: 18V~28VDC
Power protection	Isolated power supply block, Protect from surging and thunder strike
Allowable momentary power-off	<5mS
CE	Complied with EN61000-6-2:2005, EN61000-6-4:2007
RoHS	Surge Immunity ±4KV, EFT: ±4KV, ESD: 4KV, Air: 8KV

Working environment

Operation Temperature	0~50°C
Storage Temperature	-20~60°C
Operation Humidity	10~90%RH(Without condensation)
Vibration Resistance	10~25Hz (2G/30min in X,Y,Z direction)
Cooling	Natural air cooling

Others

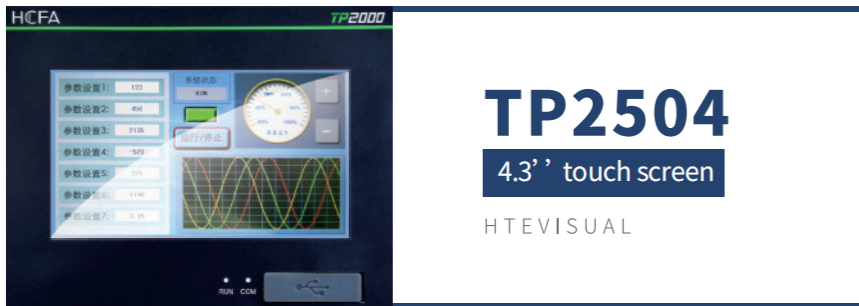
Protection Level	Front IP65(With NEMA Panel), Back IP20
Housing Material	PBT+PC
Cutout Dimension	191.5 × 137.6 (mm)
Dimension	206.4 × 155.2 × 41.0 (mm)
Weight	About 900g

Hardware specification

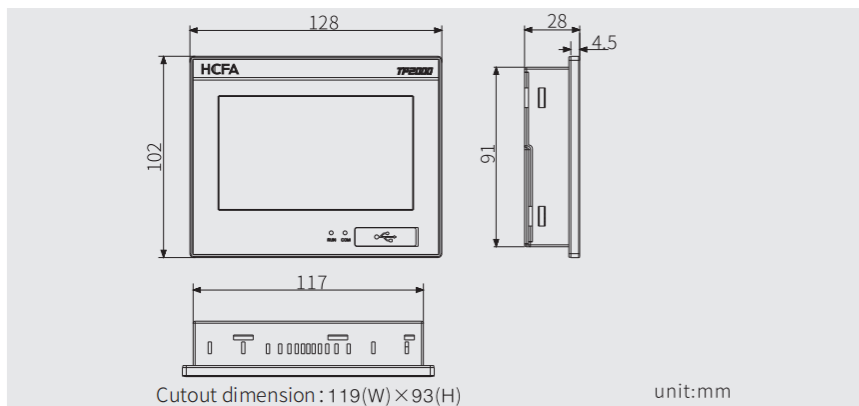
Display	7" TFT LCD
Resolution	800 × 480
Color	24 bit
Brightness	300 cd/m ²
Backlight	LED
LCD lifetime	50000 hours
Touch Panel	4 wire resistive touch panel(Surface hardness 4H)
CPU	600MHz ARM Cortex A8
Memory	128M Flash + 128M DDR3
RTC	Built in real-time clock
Ethernet	10M/100M Ethernet port
USB Port	ONE USB Device 2.0 Ethernet port ONE USB Host 2.0
Program Download	USB Host/ USB Slave/ SD card/ Ethernet are provided.
COM port	COM1/COM2: RS232/RS485/RS422; COM3/COM4: RS232

Accessories

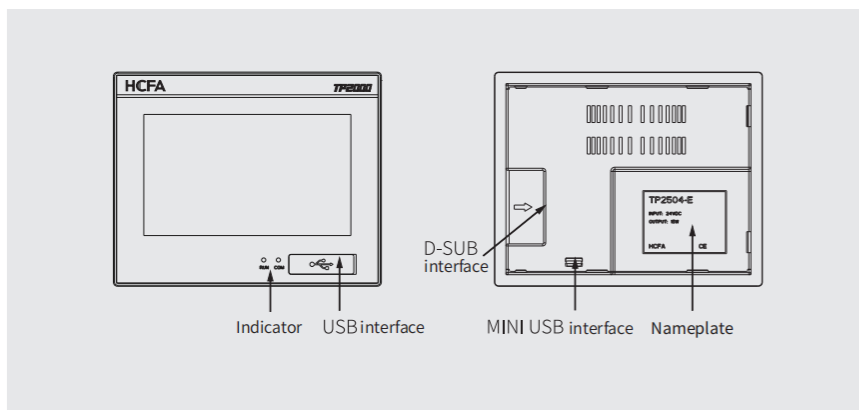
TP16-PLC- R4-8P-3M	Communication cable between TP2000 series HMI and HCFA PLC, RS422, Round 8PIN, 3M
TP16-PLC- R2-9S-3M	Communication cable between TP2000 series R2-9S-3M HMI and 232, RS232, 9PIN serial port(female), 3M



External dimension



Parts name



Configuration parameters

Parameter	TP2504-E
Color display	24bit
Ethernet	✓
SD card	×
USB HOST	✓
USB DEVICE	✓
COM1/COM3	✓
COM2/COM4	×
Isolated power supply	Non-isolated power supply
	Surge protection

Basic parameters

Electrical specification

Power Consumption	<5W
Rated voltage	24VDC, Input Range: 18V~28VDC
Power protection	Non-isolated power supply, Protect from surging and thunder strike
Allowable momentary power-off	<5mS
CE	Complied with EN61000-6-2:2005, EN61000-6-4:2007
RoHS	Surge Immunity: ±4KV, EFT: ±4KV, ESD: 4KV, Air: 8KV

Working environment

Operation Temperature	0~50°C
Storage Temperature	-20~60°C
Operation Humidity	10~90%RH(Without condensation)
Vibration Resistance	10~25Hz (2G/30min in X,Y,Z direction)
Cooling	Natural air cooling

Others

Protection Level	Front IP65(With NEMA Panel), Back IP20
Housing Material	PBT+PC
Cutout Dimension	119 × 93 (mm)
Dimension	128 × 102 × 28 (mm)
Weight	About 260g

Hardware specification

Display	4.3" TFT LCD
Resolution	800 × 480
Color	24bit
Brightness	300 cd/m²
Backlight	LED
LCD lifetime	50000 hours
Touch Panel	4 wire resistive touch panel(Surface hardness 4H)
CPU	600MHz ARM Cortex A8
Memory	128M Flash + 128M DDR3
RTC	Built in real-time clock
Ethernet	10M/100M Ethernet port
USB Port	ONE USB Device 2.0 Ethernet port ONE USB Host 2.0
Program Download	USB Host/ USB Slave/ SD card/ Ethernet are provided.
COM port	COM1/COM2: RS232/RS485/RS422; COM3/COM4: RS232

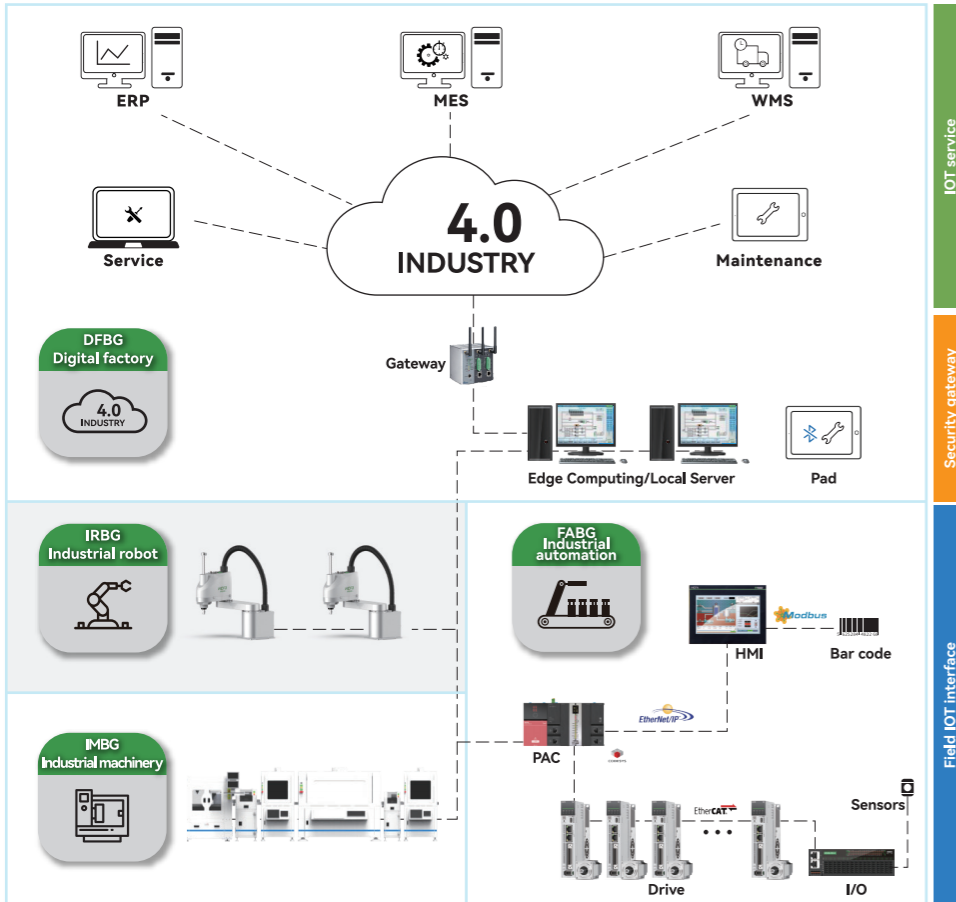
Accessories

TP16-PLC-R4-8P-3M	Communication cable between TP2000 series HMI and HCFA PLC, RS422, Round 8PIN, 3M
-------------------	---

Better Work, Better Life

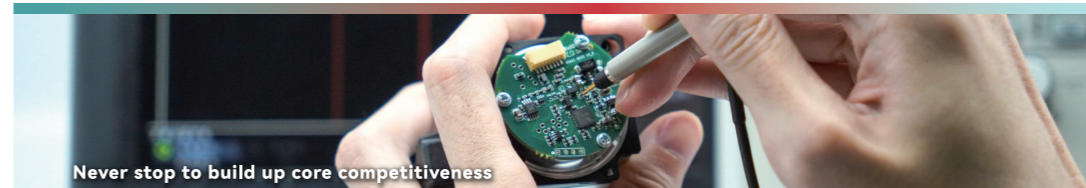


We not only provide the core components of industrial automation, but also engage in the industrial process, industrial robots, industrial machines, and digital factories, and can provide enterprises with comprehensive solutions of **automation + intelligent equipment + digitalization**



Be dedicated to creating values in
automation industry

Founded in 2011, Zhejiang Hechuan Technology Co., Ltd. is an enterprise focusing on the R&D, manufacturing, sales and application integration of industrial automation products, and is committed to providing core components and system integration solutions for smart factories. The main products include PLCs, servo systems, vision systems, encoders, inverters, touch screens, electric drums, etc., covering the entire field of industrial automation



Never stop to build up core competitiveness

R&D Centers
5
Set up nationally

R&D investment
10%+
Proportion of revenue

R&D personnel
300+
Elite gathering

- Established five R&D centers in Longyou, Hangzhou, Shenzhen, Dalian and Suzhou
- Self-designed ASIC and SOC chips, realize localization replacement
- First-class AMR magnetic technology/high-precision encoder in the industry